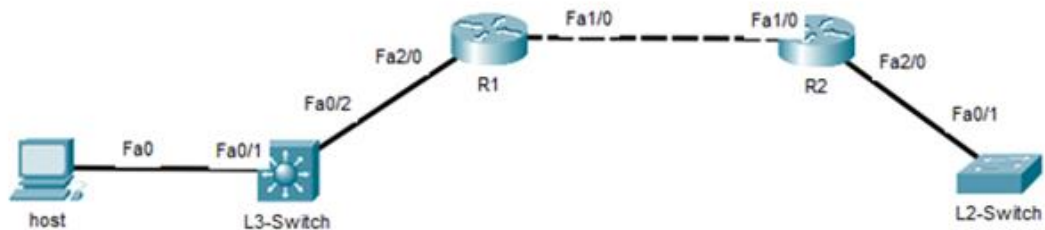


# Layer 2 Switch Management

## Lab Summary

Configure L2-Switch to allow remote management access from a Telnet session.

**Figure 1** Lab Topology



## Lab Configuration

Start Packet Tracer File: **layer 2 switch management.pkt**

Click on *L2-Switch* icon and select *CLI* folder.

Step 1: Enter global configuration mode

```
L2-Switch> enable  
L2-Switch# configure terminal
```

Step 2: Configure an SVI for L2-Switch remote management.

```
L2-Switch(config)# interface vlan 11  
L2-Switch(config-if)# description switch management  
L2-Switch(config-if)# ip address 192.168.3.254 255.255.255.0  
L2-Switch(config-if)# no shutdown  
L2-Switch(config-if)# exit
```

Step 3: Configure an IP default gateway address for packet forwarding to R2.

```
L2-Switch(config)# ip default-gateway 192.168.3.2
```

Step 4: Configure enable password for remote management access (mandatory).

```
L2-Switch(config)# enable secret cisco
```

Step 5: Enable default VTY lines 0 4 for remote management access to L2-Switch.

```
L2-Switch(config)# line vty 0 4  
L2-Switch(config-line)# password cisco
```

```
L2-Switch(config-line)# login  
L2-Switch(config-line)# end  
L2-Switch# copy running-config startup-config
```

#### Step 6: Verify Lab

Verify the configuration is correct on L2-Switch.

```
L2-Switch# show running-config
```

Start Telnet session from host-1, R1 and R2 to L2-Switch.

```
host: c:\> telnet 192.168.3.254  
Password: cisco  
L2-Switch > enable  
Password: cisconet  
L2-Switch# exit
```

#### Lab Notes

The **ip default-gateway** command is required on L2-Switch to allow Layer 3 connectivity between L2-Switch and R2. The SVI must be in the same subnet as the default gateway (192.168.3.0/24).